

Anti-TSPAN8 mIgG2b Antibody(Ts29.2)

Product information

GM-82623AB-10	10 µg
GM-82623AB-100	100 µg
GM-82623AB-1000	1 mg

Antibody Information

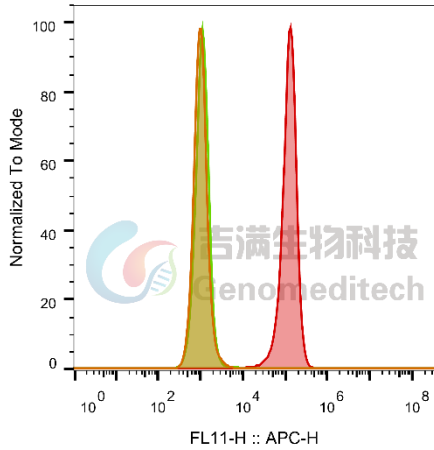
Species Reactivity	Human; Cynomolgus
Clone	Ts29.2
Source/Isotype	Monoclonal Mouse IgG2b/k
Application	Flow cytometry; Bioactivity-ELISA
Specificity	Detects TSPAN8
Gene	TSPAN8
Other Names	TM4SF3
Gene ID	P19075 (human), G7PI18(Cynomolgus)
Background	<p>TSPAN8 (Tetraspanin 8) is a Protein Coding gene. Diseases associated with TSPAN8 include Pancreas, Annular and Diabetes Mellitus. Among its related pathways are Extracellular vesicle-mediated signaling in recipient cells and 11p11.2 copy number variation syndrome. Tetraspanin-8, encoded by the TSPAN8 gene, is a member of the transmembrane 4 superfamily, also known as the tetraspanin family. It is a cell-surface glycoprotein that complexes with integrins. TSPAN8 is involved in various signaling pathways, including those related to extracellular vesicle-mediated signaling in recipient cells and 11p11.2 copy number variation syndrome. Additionally, TSPAN8 is associated with diseases such as Pancreas, Annular and Diabetes Mellitus. Its role in mediating signal transduction events contributes to the regulation of cell development, activation, growth, and motility. Furthermore, TSPAN8 is expressed in different carcinomas, indicating its potential relevance in cancer biology.</p>
Storage	Store at 2-8°C short term (1-2 weeks). Store at ≤ -20°C long term. Avoid repeated freeze-thaw.
Formulation	Phosphate-buffered solution, pH 7.2.
Endotoxin	< 1 EU/mg, determined by LAL gel clotting assay

Version:3.1 Revision Date:12/25/2023

Data Examples

Flow cytometry

The recommended usage range is 0.5-4 μ g per test. H_TSPAN8 HEK-293 Cell Line (Catalog # GM-C35020) was stained with Anti-TSPAN8 mlgG2b Antibody(Ts29.2) (Catalog # GM-82623AB) or isotype control antibody, followed by anti-Human IgG APC-conjugated Secondary Antibody.

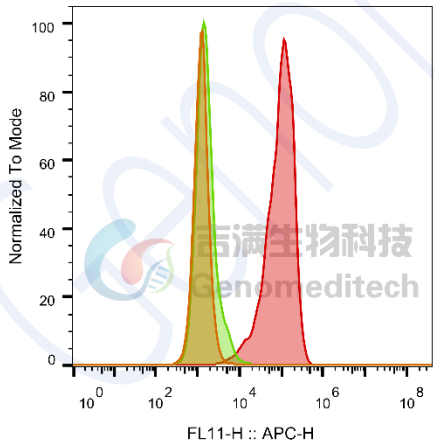


SampleID	Geometric Mean : FL11-H
HEK-293 anti-TSPAN8+APC-2nd Ab	1023
HEK-293 H_TSPAN8 M_igG+APC-2nd Ab	1138
HEK-293 H_TSPAN8 anti-TSPAN8+APC-2nd Ab	120391

Fig. FACS

Flow cytometry

The recommended usage range is 0.5-4 μ g per test. Cynomolgus_TSPAN8 CHO-K1 Cell Line(Catalog # GM-C35024) was stained with Anti-TSPAN8 mlgG2b Antibody(Ts29.2) (Catalog # GM-82623AB) or isotype control antibody, followed by anti-Human IgG APC-conjugated Secondary Antibody .



SampleID	Geometric Mean : FL11-H
CHO-K1 anti-TSPAN8+APC-2nd Ab	1243
CHO-K1 Cyno_TSPAN8 M_igG+APC-2nd Ab	1607
CHO-K1 Cyno_TSPAN8 anti-TSPAN8+APC-2nd Ab	88648

Fig. FACS

Bioactivity-ELISA

Human TSPAN8 Protein; hFc Tag (Catalog # GM-87521RP) was immobilized at 1 µg/ml (100 µL/well). Increasing concentrations of Anti-TSPAN8 mIgG2b Antibody(Ts29.2) (Catalog # GM-82623AB) were added.

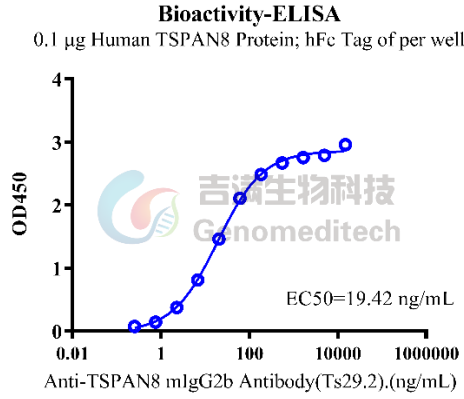


Fig. ELISA